

Soul Consciousness: The Art of Leigh McCloskey

Visionary artist Leigh McCloskey offers glimpses into the higher planes of consciousness.

Approaching visionary artist Leigh McCloskey's Malibu home from the outside, you could be forgiven for thinking it was just another house on the block. But upon entering, the stoic facade starts to deteriorate, and you quickly begin to realize that the wonders it holds within are anything but ordinary.

Like stepping through a proverbial portal into another dimension, the further you journey into Leigh's world, the more mystical and magnificent it gets. McCloskey likens his home in some ways to the human psyche; stepping inside is like venturing into an immersive experience of the psychological and transpersonal forces that shape our lives, psychedelically illustrated in incredible detail in an array of tantalizing colors and sym-





bolic forms. The ground floor, which in many ways represents the unconscious, is strewn with Leigh's detailed drawings and interpretations of the arcana of the Tarot, which as anyone who has studied it knows, symbolizes the archetypal energies and forces that are influencing and shaping our lives in any given moment—an apt metaphor for the depths of the mind that dominate most people's existence. This is the realm of matter and form, representing our lives here on Earth. In some ways rich and exotic, punctuated with transcendent experiences of beauty and glimpses of higher forms, and in others quite mundane. And so it could be said of Leigh's artwork in this room—which are glimpses of the divine set against a backdrop of a large but understated living room.

But, like the human psyche, there is far more waiting to emerge on the higher planes of consciousness. To venture into that world, one must transcend the mind and emerge into

the superconscious realms that await on the upper floors of Olandar, Leigh's dream-inspired name for his humble-yet-profound abode.

Ascending the stairs to what can only be described as one of the greatest collections of visionary art humanity has ever known, it quickly becomes obvious one is entering a living temple and library—a cosmic painted cave of the imagination and the deific forces that give it shape and form. Every square inch of the entire upper floor of Leigh's house—ceiling, walls, couches, chairs, pillars, bookshelves and more—are the canvas of his greatest work, appropriately titled “The Hieroglyph of the Human Soul.” As you adjust to the immensity of what he has created, drenched in an almost cartoon-like layer of paint, the depth of the experience begins to emerge. Depending on your perspective, different things emerge, which is in many ways a metaphor for our perception, which obeys

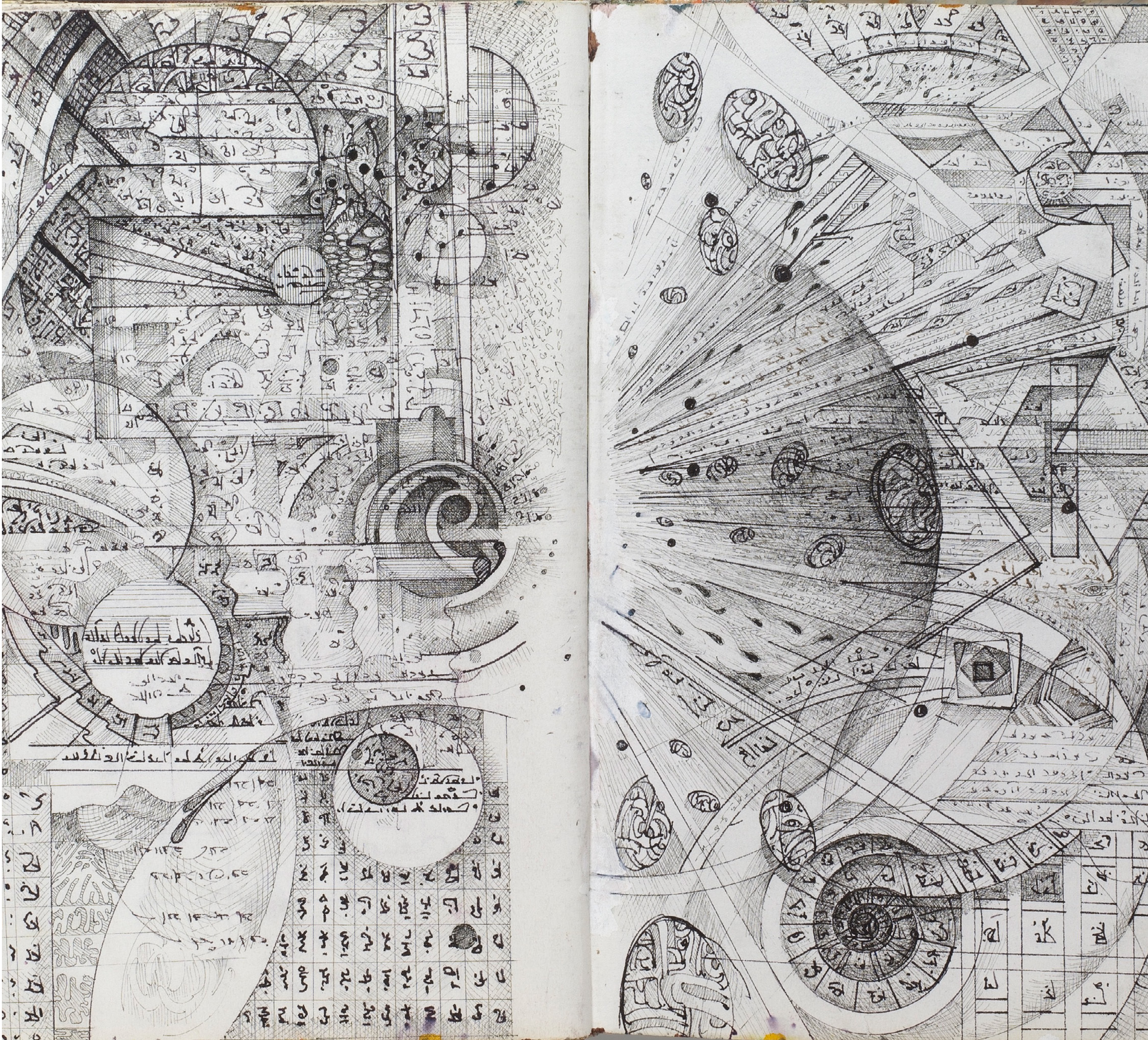


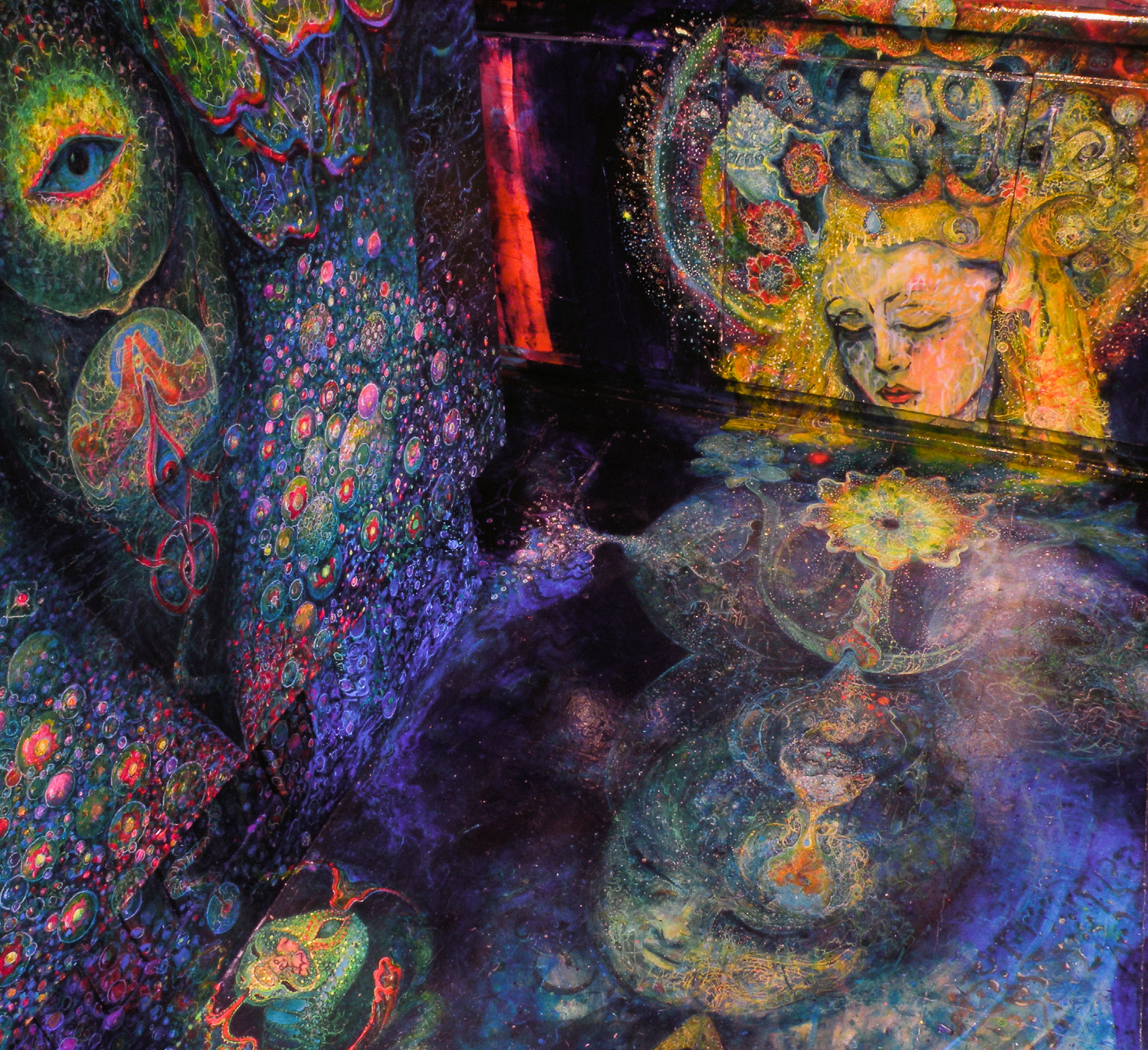


the same laws and forces. Viewing the living library as a gestalt, one sees an interconnected series of psychedelic yet spiritually activating images that form a grand tapestry and story in their own right; but zoom in on any given piece of the puzzle, and one begins to observe the fractal nature of his art. The larger shapes and forms are composed of the archetypal and symbolic particles that give them rise—this too a metaphor for the layers of material reality and form, and the journey from the quantum to cosmic planes.

No surface of this floor was spared the touch of Leigh's brushes and inspiration—the canvases of the room vary from skylights to mirrors, to the spines of bibles and bud-dhas, to candles, drawers, tiles and tables, all of which are covered in incredibly intricate paintings of the perennial philosophy in all its shapes and forms. On that note, Leigh's artistic influences range from Hermeticism to Alchemy, to Kabbalah, to the great myth-

ological and philosophical traditions, and far beyond. Like all great mystics and shamans, Leigh draws inspiration from all sources, and as a result, his artwork transcends the boundaries of space and time, of shape and form, and draws on something timeless within and around us all. As such it is almost impossible to describe his artwork in meaningful terms—in every sense of the phrase, the art speaks for itself, transmitting messages so deep and profound that the simple experience of observing the artwork is a transformative experience in and of itself. And while Leigh was the vehicle through which it took shape, it is clear that higher forces were at work through his open vessel, guiding his mind and hands to produce what he would later discover were multidimensional forms. Literally so—quite sometime after they were finished, he discovered that when viewed with 3D glasses the images in the library burst into three-di-





mensional shape and form. To paint consciously at that level is already at the level of savant, but to do it without realizing it at all could only be described as the work of the divine. “I wasn’t expecting it to be 3D; I didn’t figure out how to do it,” McCloskey says. “It was inherent in the questions I was asking, as if consciousness itself is saying, ‘You see, I’m far more clever than you think I am, because you think I’m as clever as you are, and you’re not that clever.’”

And this statement is a perfect encapsulation of Leigh himself, at once relatable and enigmatic, profound and playful, kind and cosmic. After all, these paradoxes only exist in the mind, and when one truly lives in the question, as Leigh so clearly does, the mystical can emerge in a variety of impossible ways.

To see more of Leigh’s work and learn about his rich artistic and spiritual legacy, visit his website: leighmccloskey.com







